



Key

THE RANDOM STAGE
Ground Floor - Wheelchair accessible

THE HEYDAY DOME
First Floor - Please contact us about Wheelchair access

THE STUDIO
Second Floor - Please contact us about Wheelchair access



YES YES YES

MAY 28 - JUN 1 | 8pm | \$25/\$15

Part confession, part documentary, and part open conversation, Yes Yes Yes is a theatre show that explores the knotty and necessary topics of healthy relationships, desire, and consent. From the makers of Jane Doe & Body Double.



RUNNING LATE

MAY 28 - JUN 1 | 6.30pm | \$20/\$15

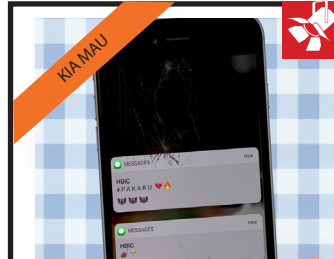
As Jamie waits at a remote bus stop, she is confronted by different passersby, each waiting in their own way while they deal with their inner demons. But what is Jamie really waiting for? Experience the premiere of this coming-of-age play.

KIA MAU

01-15 JUNE 2019

SEE THREE PLAYS
WITH A SEASON PASS
\$45

VISIT BATS.CO.NZ
FOR MORE INFORMATION



PAKARU

JUN 4 - 8 | 7pm | \$22/\$16

A young family helmed by a solo mother, trying to survive on the breadline in present day Aotearoa. Burdened by bills, social welfare, and a small pay packet, she faces huge expectations. Filled with real characters dealing with real issues.



OVER MY DEAD BODY: LITTLE BLACK BITCH

JUN 4 - 8 | 6pm | \$20/\$15

When the dog turns up Rangitoto knows he must help. He must adopt her and he must protect and hide her. But as he feeds her, his tōtō begins to run deeper and darker than ever before. Rangitoto has awoken. The earth begins to dance, and the sky bleeds.



AU KO TUVALU

JUN 6 - 8 | 8pm | \$20/\$15

The final day of Tuvalu's evacuation is upon us.

The people of Tuvalu must say their final goodbyes, they must leave never to return, never to see their beloved Tuvalu again...

KIA MAU

FESTIVAL

01-15 JUNE 2019



PALU

JUN 5 - 8 | 9.30pm | \$20/\$15

Come, fai kava, fai ava, talanoa with Y|NOT as young poly men endeavour to make meaningful connections with each other culturally. Where our common ground is the realm of sharing, understanding and acceptance. Woven together with folk songs of old Polynesia.



THE WEEKEND

JUN 11 - 15 | 6.30pm | \$20/\$15

Lara has only the weekend to track down her partner as she traverses the world of public housing, drug dealing, and addiction. One woman embodying 10 characters - hurtling the audience through the streets and public housing towers of Redfern-Waterloo.



WINDIGO

JUN 11 - 15 | 8.30pm | \$22/\$16

Fierce and visceral, Windigo resonates like a scream. Returning to her grandmother's home in the Lac Seul Reserve, Canadian choreographer of mixed Ojibwe and settler heritage Lara Kramer confronts a latent war lurking under the surface.



RAURU

JUN 13 - 15 | 6pm | \$20/\$15

Cove Theatre is proud to welcome Wellington to Nan's house. Prepare for some harsh language, and harsh truths, as Ruby, Ata and their ailing grandmother deal with the secrets you don't spill at the kitchen table... just don't forget your tangi clothes.



FISHIN' CHIP

JUN 12 - 15 | 8pm | \$20/\$15

After burning down her step-family's beloved Fish'n Chip shop, Chip races to her treasured houseboat - one of two things left by her mother. A stolen treasure and a birthday later, Chip is faced with the law, her sister, and most terrifyingly, her Aunty.



DIGGING TO CAMBODIA

JUN 13 - 15 | 9.30pm | \$22/\$16

Through words, movement and songs from Cambodia's 1960's rock era - Digging to Cambodia is a letter to her past, present and future self, it asks us all "What is worth remembering?"



01-15 JUNE 2019

SEE THREE PLAYS
WITH A SEASON PASS
\$45

VISIT BATS.CO.NZ
FOR MORE INFORMATION

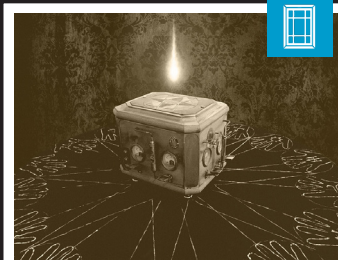


DOUBLE FALSEHOOD

JUN 18 - 22 | 7pm | \$20/\$15

Young love battles old values of honour and family.

Four characters struggle to balance love, parent approval and personal honour in a love story that isn't just for Shakespearean times.



THE SÉANCE EXPERIMENTS

JUN 19 - 22 | 6.30pm, 7.30pm & 8.30pm | \$18/\$14

Research is being conducted on the mysterious Pickering Box: 8 people at a time will participate in experiments to explore its secrets. Are you brave enough to risk being part of a séance? Will you be the one to unlock the Box's powers?



IDEATION

JUN 26 - 6 JUL | 7.30pm | \$22/\$17

In a corporate think tank, a team is asked to do the unthinkable in 90 minutes.

Can they complete a design for mass murder in time for petit scones and soccer practice?



NEIL MACLEOD: TO UNFOLD

JUN 27 - 29 | 9pm | \$20/\$15

Neil fuses raw lyrical honesty and downbeat electronic textures, creating and delivering an unforgettable sensory experience and has captured the hearts and minds of many with his captivating compositions and his immersive live performances.



FISH IN PINK GELATINE

JUL 2 - 6 | 6pm | \$20/\$15

A concert of experimental music for the eye and ear. A series of absurd, beautiful instrumental solos emerge, examine themes of location, atmospheric medium and aquatic life, then retreat to the murky depths.



MANIAC ON THE DANCE FLOOR

JUL 9 - 13 | 8pm | \$20/\$15

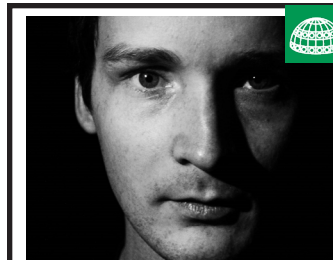
A bangers-fuelled, hour-long rave that makes a song and dance about bipolar and recovery. Shortlisted for the Playwrights b4 25 competition and based on lived experience, Natasha Lay's story is a lesson in burning calories, burning bridges, and burning out.



DANCING ON MY OWN

JUL 9 - 13 | 6pm | \$20/\$15

Maddy is still dancing on her own, but is feeling more okay about it this time round. She's ready to make you laugh but not at her own expense...Hopefully! The key is to just have fun, and to not panic. At all.



BLEEDING BLACK

JUL 16 - 20 | 9pm | \$20/\$15

National sport. National obsession. Sam is told in his first rugby match, age five, "stop playing, or harden up". Choosing to harden up, he grows up struggling to deal with hyper-masculinity in a country dominated by rugby culture.



THE DUCK WHO LOVED ME

JUL 16 - 20 | 11am, 1pm & 6.30pm | \$12

With music, dancing, puppetry and jokes for all ages - this is a joyous and sparkling, non-species specific show the who family will enjoy!



HIGH SCHOOL MAGICAL: THE REUNION

JUL 23 - 27 | 8.30pm | \$20/\$15

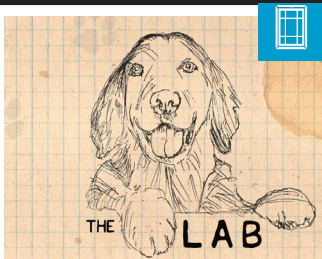
The ten year reunion at Spellington College of the Magical Arts threatens to open old secrets and cast new spells. Magical improvised comedy from PlayShop.



POWER

JUL 23 - 27 | 6.30pm | \$20/\$15

In defence of all that is girl pop, POWER mashes together synchronised dance moves and emotional feminist rants to the soundtrack of Little Mix. POWER will hold the multiple, contradictory feelings that run through our bodies: trauma, hope, and hip thrusts.



THE LAB

Last Tuesday of every month starting JUN 25 | 7pm | \$5

Are you developing a new show, have an idea you just can't shake? Are you experimenting with a new form or skill? The Lab is the perfect testing platform to put your emerging work in front of a small audience of fellow artists and get some feedback!

LOVE BATS?

BATS is not for profit. The majority of money from ticket sales is paid out to the artists who make the shows to help support them and their work. We keep our venue fees low so that BATS is an affordable place to create and experience exciting new NZ performance.

This means that we rely on people like you to join our mission to grow exciting new performance and new artists.

If you would like to help, head to bats.co.nz and click "Support Us" to find out more.

KEEP CONNECTED



bats.co.nz



BATStheatre



04 802 4175



@BATS_Theatre



@bats_theatre



Subscribe to BATSmal at bats.co.nz



We hope that you
enjoy what's flying
into BATS in the
coming months.



KIA ORA

Hey BATS fam! We're still flying after our 30th Birthday BATStravaganza and can't thank you enough for celebrating this huge milestone with us.

Each and every one of you contribute to us continuing to have live art lighting up lives here at 1 Kent Terrace.

We have a wee announcement to make... The Pit Bar is making a comeback! This September we will see our ol' fave back and better than ever.

Kia Mau is back this June! Make sure you take this opportunity to see stunning performances by Māori, Pasifika, and Indigenous artists from across the globe. Haere mai!

Arohanui, BATS xxx

DID YOU TAKE THE COVER PHOTO?

We'll be using photos from our archives for our Guano covers throughout 2019. If you want to submit photos of BATS from days of yore, please send them to archives@bats.co.nz. If you know who took this cover photo, send us an email and we'll put out a proper photo credit.

THANK YOU!

Lots of aroha to our core funders

Massive hugs to all of our current sponsors

All the birthday cake for our 30th Anniversary sponsors

A big thanks to everyone who has made a contribution!

GET SOCIAL

Up 1,268 Followers Jan 2018

6,855 PEOPLE

FUN FACTS - IN 1 YEAR

- Events reach **146.2K** people
- 6.6K** event responses
- 2.6K** ticket clicks from events

We gain 15 new followers pw on average

1,467 PEOPLE

BEST VOTED THEATRE

Capital Magazine Best of Awards

73% feature emerging people in key creative roles

2,800 PRINTED QUARTERLY

51% World Premieres of NZ Work

PEOPLE

31,398 Total Attendance

602 Performances

133 Shows

2018 AT A GLANCE

30 YEARS

BATS MAIL

We gain 10 new followers pm

7035 SUBSCRIBERS

7.9% Agree that BATS represents the **BEST & BOLDEST** Theatre

4.7/5 Overall Satisfaction

4.6/5 Audience Feedback

21 TYPES OF CRAFT BEER SOLD

2,205 CANDY BAGS SOLD

17.83% OF OUR AUDIENCE ARE FIRST TIME VISITORS

LUMEN BAR

We gain 15 new followers pw on average

1,467 PEOPLE

BEST VOTED THEATRE

Capital Magazine Best of Awards

73% feature emerging people in key creative roles

2,800 PRINTED QUARTERLY

51% World Premieres of NZ Work

EVENT HIRE AT BATS

You could hire BATS Theatre! Hold your next workshop, seminar, launch party or special event in one of BATS' unique spaces.

email kristin@bats.co.nz

to find out more about rates, dates & what we offer.

LUMEN

THE BAR AT BATS

LIGHT UP YOUR NIGHT

BATS THEATRE REGULARS

Further details at bats.co.nz

LATE NIGHT KNIFE FIGHT

MONTHLY | 9pm | \$15/\$12

A monthly improv show where three teams face off in a battle for glory, honour, and the audience's favour. The winner returns in the headline spot next month, the losers wail and gnash their teeth. We'll bring the knives; you bring the judgement.

DOOM & BLOOM

FRIDAY NIGHTS from MAY 31
7pm | \$16/\$12

A Chicago improviser and a Kiwi thespian make up a play on the spot, based on your answer to one question: How would you be as you wait for "the end"? Prepare to laugh and cry as we explore your own personal apocalypse.

PLAYSHOP LIVE

FRIDAY NIGHTS from MAY 31 | 9pm | \$16/\$12

PlayShop LIVE is late-night improvised comedy without limits: fast, physical and unpredictable. A night with PlayShop is completely unique and feels like a party with the quickest, loveliest, naughtiest actors you'll meet.

FAQs

Q: How early should I arrive before a show?

A: We recommend arriving at least 20 minutes before the show so you can collect your tickets from the Box Office and grab a drink from Lumen Bar!

Q: How do I book tickets?

A: Head to bats.co.nz to book tickets online or call our Box Office on (04) 802 4175 after 5pm. If you prefer to keep things a bit fast and loose, rock up to the Box Office on the night, as we often have last minute door sales available.

Q: Do you have wheelchair accessibility?

A: BATS has a stairclimber for access to and from The Heyday Dome and The Studio. BATS staff are trained in operating the device but to ensure two trained staff are available to assist, please provide 24 hours notice. The Random Stage is on the ground floor and has 3 movable seats that can be taken out to provide wheelchair spaces. Please let us know by 4.30pm on the day of your show if you require a wheelchair space.

Q: I want to see a show but it's sold out. What do I do?

A: If a BATS show completely sells out and you're desperate to see it, give us a call on 04 802 4175. While we can't magic up extra seats in the theatre we can take your details and give you a call in case we get any advance cancellations.