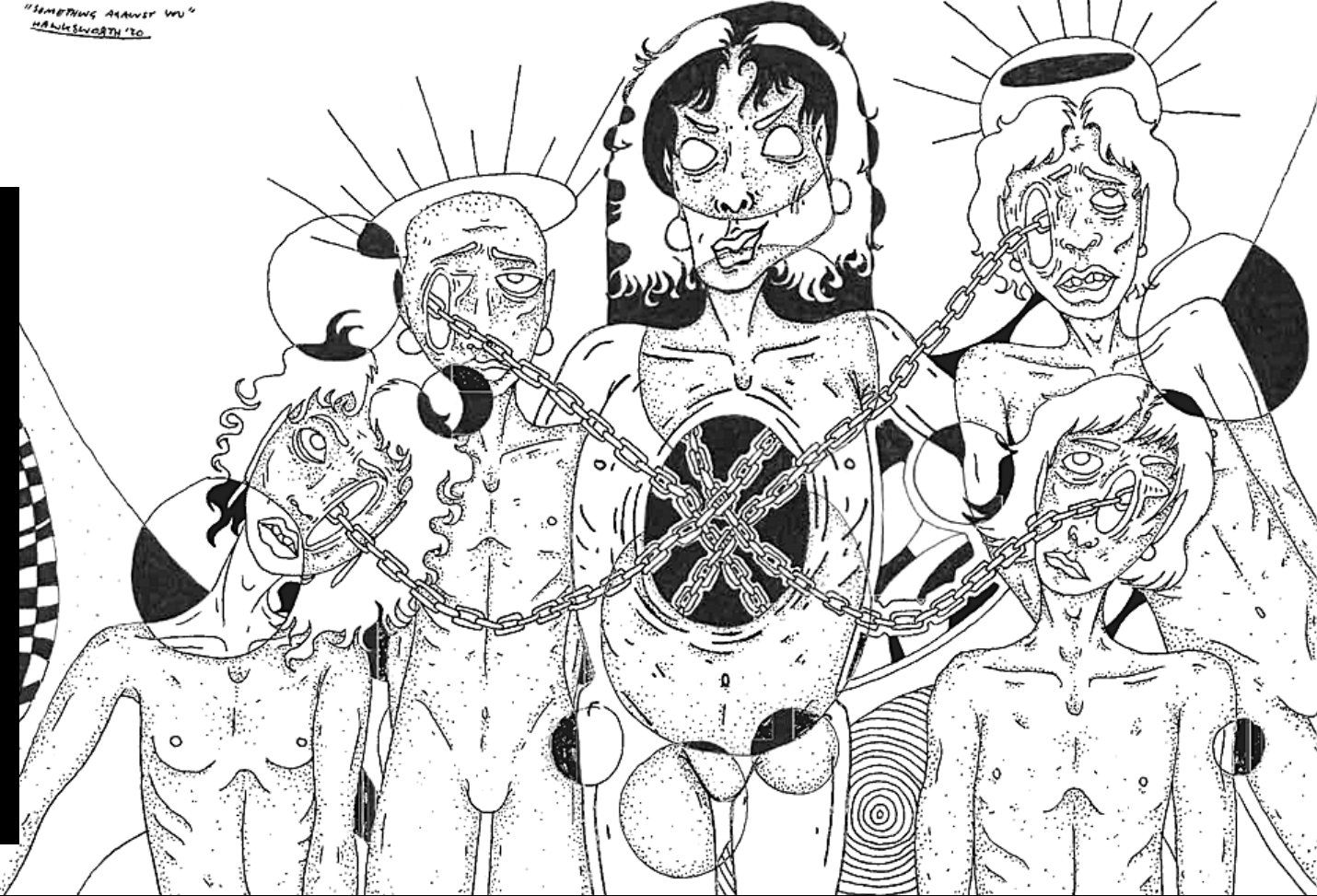


"SOMETHING AGAINST YOU"
HAKISWORTH '10

JANUARY - MARCH 2021



BATS Theatre
1 Kent Tce
Wellington

GUANO 98

COVER ARTIST

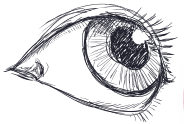
HARRIET HAWKSWORTH



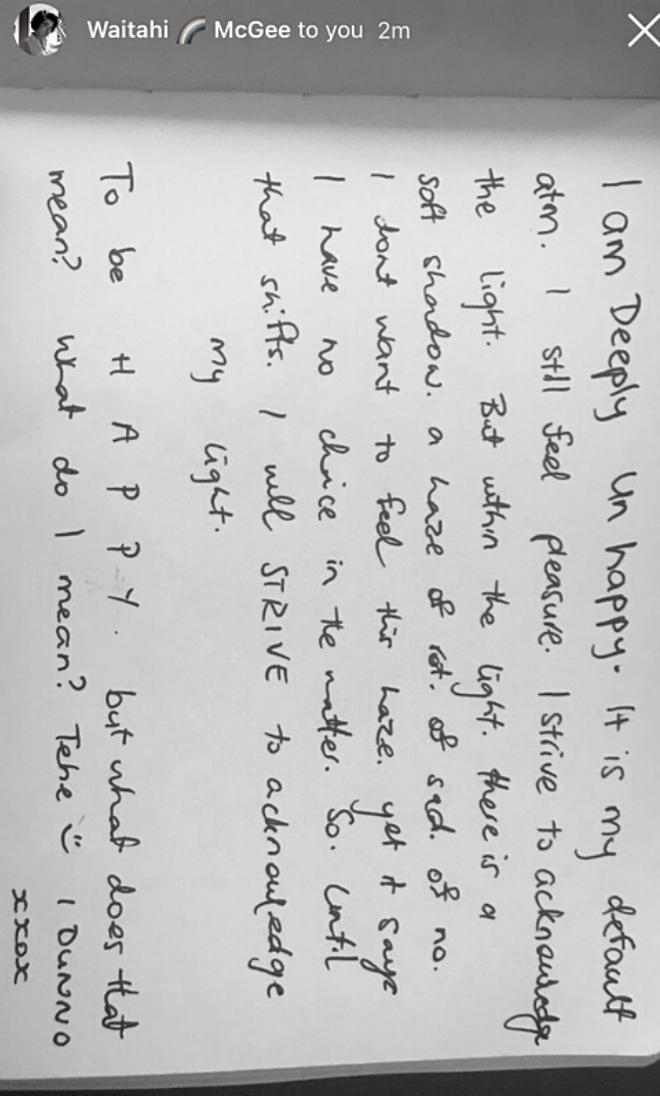
Harriet Hawksworth is an up and coming artist based in Wellington. Their multimedia practice is a self-reflective exploration of sound, society and the surreal. They first became present in Wellington through the zine *Totally Wired*, which functioned as both teenage diary and an open love letter to the music from which they draw much of their inspiration. Their recent work has been centred around creating an immersive art experience through audio, sculpture and digital installations. "I think I spent a lot of time limiting the scale of my work and confining it to a certain format, the last couple of years have really been a reaction against those self-imposed restrictions and in that way a time of change and upheaval in my own practice."

JOIN
US
THURSDAY
28TH JAN
5.30PM
FOR HARRIET'S

EXHIBITION



A POEM BY WAITAHI MCGEE



I am Deeply un happy. It is my default
atm. I still feel pleasure. I strive to acknowledge
the light. But within the light. there is a
soft shadow. a haze of sat. of sed. of no.
I dont want to feel this haze. yet it cage
I have no choice in the matter. So. until
that shifts. I will STRIVE to acknowledge
my light.

To be H A P P Y. but what does that
mean? what do I mean? Tehe " I DUNNO
xoxo



KIA ORA WHĀNAU

As I write this it is the end of 2020 (literally the last day in the office) and the whole team is READY for a blimmin break. So I hope this finds you (and us) well rested and ready for a new year.

We know that 2021 will bring it's own set of challenges but 2020 has proven that as a team we are resilient, dynamic and able to rise up to what may come our way.

Early in December we received confirmation that our applications for both CNZ's Adaptation and Capability Funds were successful. We are so incredibly grateful for the opportunities that these funds allow us. We popped some bubbles and sat together reflecting on the amount of mahi and responsibility we have, to make the absolute most of it.

We will put out a more in-depth overview of what and where these funds are going very soon but in the meantime I'd like to celebrate a few of the initiatives we'll be bringing in 2021.

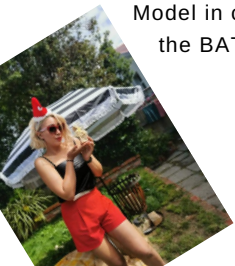
Some of this funding will go towards the building and implementation of a new Intercultural Policy, we will also be trialling a new "Co-Pro" Model in collaboration with Basement Theatre, we will be continuing the BATS Artist Residencies and so much more. It's going to be a huuuge year!

Please get in touch if you'd like to chat about these.

Look after yourselves whānau,
Stevie xx



LETTER FROM THE EDITOR VIBE



MUSIC VIDEO RELEASE FOR KATREENA ERIN'S 'LORD'

JAN 16 | 8PM | \$20

We are excited to invite you to an intimate and cosy evening of live music and the premiere screening of the music video for Katrenea Erin's single LORD. Katrenea Erin will be joined by several friends - including Ewan Clark on piano and Charley Davenport on cello, performing a set of original songs along with a couple of classic covers.

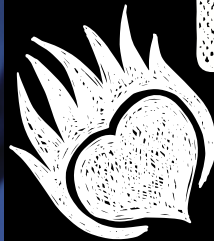
Doors open at 7pm.



WELLINGTON NZ
FRINGE
ARTS FESTIVAL

26 FEBRUARY
— 20 MARCH

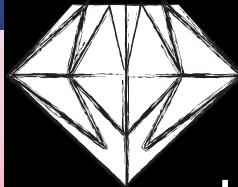
BITS & TIX FROM
FRINGE.CO.NZ



EVENT

HIRE

AT BATS

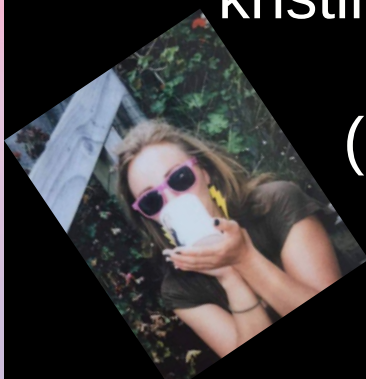


GET IN TOUCH!

kristin@bats.co.nz

(04) 802 4176

bats.co.nz



First Show 2021



Development season of a new solo theatre show full of joy, pleasure and connection. Written and performed by Andrew Paterson, Directed by Tessa Waters and Performance Design by Meg Rollandi. At 12 Years old Andrew was nominated as Best Actor in a Feature Film. The film was a coming of age tale about a young queer country kid...at the time Andrew didn't know he was queer....yes...well maybe...its complicated....it still kinda is?

ANDREW PATERSON IS WERKING ON IT

JAN 26 - 30 | 6.30PM | \$22/\$18



Real-life mother-daughter star in the premiere of a resounding show about growing up online and IRL. A contemporary coming-of-age tale across generations. Sharp, awkward and funny with a gut-punch; a powerful tale of our digital age from honest experience.

THE SECRET LIVES OF SIXTEEN-YEAR-OLD GIRLS

FEB 16 - 20 | TUE/WED 6.30 + THUR-SAT 8.30PM | \$22/\$18



BROWN CROWN

FEB 5 - 13 | 6.30PM | \$22/\$18

A young Samoan woman journey's through life in a contemporary world while surrounded by expectations and legacy. Her life is over-shadowed by the old legend of Nafanua told to her as a young girl by her grandmother.



BORDERS & MARGINS

FEB 5 - 13 | 8.30PM | \$22/\$18

A "Cinematic Theatre" production merging both film and theatre. It is about a deeply tragic story of espionage embedded in the historical 1953 East German uprising.

SIX DEGREES FESTIVAL

FRESH FRONT OF HOUSE FACES



Meet Michiel van Echten

Michiel has come onto the BATS team as a Duty Manager. He's a self-described "creative anythinger and chocolate fiend". Michiel has been an absolute GEM keeping the bar running through staff changes.

Kia Ora! My name is Leah and I am one of the Front of House newbies. I was raised in Wellington and have recently graduated from the New Zealand School of Music. I am a freelancing classical musician, arts advocate, coffee enthusiast, and dedicated cat mum.



Meet Isabella "Molly" Friis

Moved to Wellington from Hawkes Bay after my overseas trip was cancelled - I'm now studying Fashion Design at Massey and loving it here. I have a range of creative interests including theatre, design, practical art, fashion and writing. I'm also a music enthusiast - I play the guitar, sing, was raised by a DJ and love a good party.



... but make it Fringe!

f BATS Theatre

@BATS_Theatre

@BATS_Theatre



* Please note there are no shows on Mondays, and all Sunday shows start an hour earlier

February

26 27 28
F S S

The Boy With Wings
6:30pm Fri,
11:00am - 1:00pm Sat + Sun

March

2 3 4 5 6 7
T W T F S S

Big Foot
6:30

9 10 11 12 13 14
T W T F S S

Dr Drama Makes A Show With You
6:00 (+ 2:00 Wed)

16 17 18 19 20
T W T F S

Sleepwalkers
6:30

Something's Starting To Sink
6:30

Opens Feb 18

Standard Acts
7:00

Wisdom of Water
7:00

Too Many Dead People
7:00

Introspection
7:00

Celestial Nobodies
7:00

Slay The Dragon or Save The Dragon or Neither
7:00

Opens Feb 24

Marble Cinematic Universe
7:30

Explore Its Brain
7:30

Alive Tonight Live!
7:30

Great Gig in VR
7:30

Closes March 23

Opens Feb 23

Company Kamupene
8:30

Cupid's Guide to Modern Love
8:30

I Don't Know How To Dance
8:30

You Meet In A Tavern
8:30

Man Lessons
8:30

Table
9:00

Circle Of Life
9:00

The Solitaire Mystery
9:00

Habuk
9:00

Shitspeare
9:00

Dark Matter VR
6:00 - 8:00, The Pit Gallery
D+D Live 10:00

D+D Live 10:00

Ivy Blue
10:00
D+D Live 10:00





STANDARD ACTS

FEB 18 - 26 | 7PM | \$25/\$20

Karin and Arlo are friends. One is stronger; one remembers their lines. Hold for wrestling. This new, experimental theatre work explores the nature of power by smashing together physical games, Great Expectations, stand up comedy and a throwback soundtrack.



COMPANY KAMUPENE

FEB 23 - 27 | 8.30PM | \$25/\$20

Company Kamupene were formed to bring balance to the New Zealand Land Wars. A Māori outfit who must do what no one else wants to do. They are revered throughout the land and are famous for the things they have done. Trouble is, they're a bit shit.



MARBLE CINEMATIC UNIVERSE

FEB 24 - 27 | 7.30PM | \$20/\$15

One man and an overhead projector take a humble marble on a hero's journey. With no dialogue, analogue technology and all illusions constructed live in front of the audience, this show promises more humility and charm than you can fit your heart around.



THE BOY WITH WINGS

FEB 26 - 28 | 11AM, 2PM + 6.30PM | \$16/\$12

Award-winning 'Birdlife Productions' promise laughter, tears and a thrilling adventure when an old fable is melded with the miracle of bird migration, asking "how do I trust my inner map - how do I find my own wings?" Puppetry and music for ages 5 to 95!



TABLE

FEB 26 - MAR 2 | 9PM | \$20/\$15

Ever wonder what lives your antique furniture has been a part of? Where is a table truly happy? Join STEW Productions as theTable is a new New Zealand ensemble devised piece from STEW Productions, the same team that devised, produced and performed *ELEVATOR!*



DARK MATTER VR

FEB 26 - MAR 6 | 6PM | FREE IN THE BAR

Best of Fringe 2017 winner Dark Matter returns as a VR experience! This VR was created as part of the NZ Exhibit at the 2019 Prague Quadrennial. Experience the lighting installation from the viewpoint of the performer. Beautiful soundtrack by Jeremy Mayall, and filmed by Ed Davis. Lighting by Marty Roberts. Experience takes 5mins.



BIG FOOT

MAR 2 - 6 | 6.30PM | \$20/\$15

Siblings Eva and Charlie have a problem. Their long-time friend and guardian, Big Foot, is gone. As they grapple with this reality, they travel to the world he had created with them: The Land Beyond the Garden Shed.



WISDOM OF WATERS

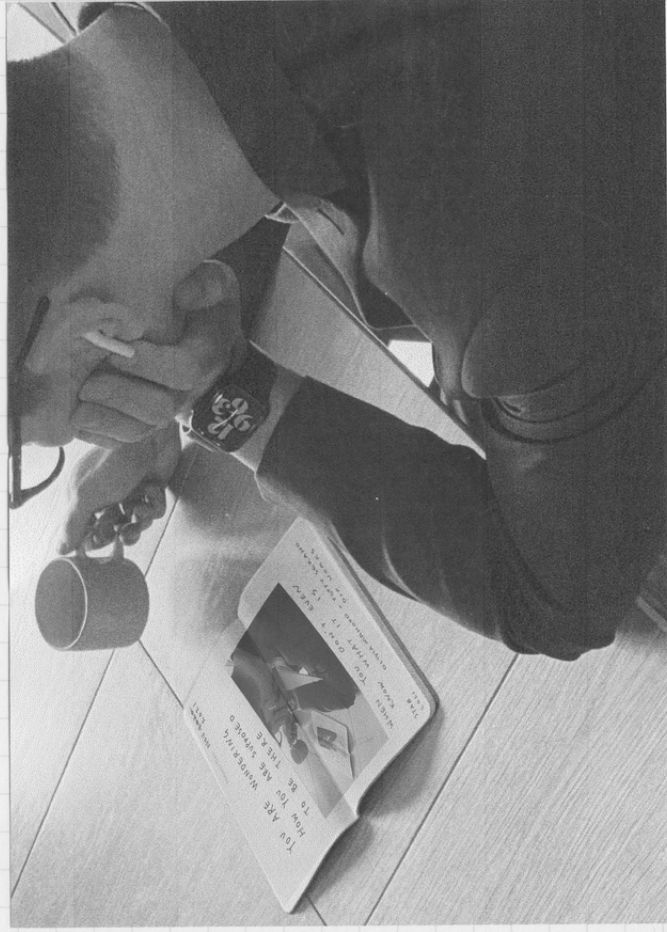
MAR 2 - 6 | 6PM | \$22/\$18

This is a surreal and serene exploration of many forgotten feminine figures. We are navigating the subliminal ideologies that linger in our cultural context, long after certain tales have been told. An embodiment of Mitochondrial Memory.

NZ FRINGE FESTIVAL

Date: Nov ~~2020~~
2021

YOU ARE WONDERING
HOW YOU ARE SUPPOSED
TO BE THERE



WHEN YOU DON'T EVEN
KNOW WHAT IT IS

STAB

2021

OLIVIA MAHOOD + POPPY SERANO

O+P WORKS



EXPLORE ITS BRAIN

MAR 3 - 6 | 7.30PM | \$20/\$15

Fascinated by the concept of a 'digital brain' making choices for you, subjecting your reality, manipulating and monetising your world. Narrated through live classical piano 'Explore Its Brain' humanises the algorithm, whilst unraveling its objective.



CUPID'S GUIDE TO MODERN ROMANCE

MAR 3 - 6 | 8.30PM | \$20/\$15

Meet-cutes! Messy first dates! Wild misunderstandings! Modern romance sure is tricky, but Cupid reckons they've got this whole dating thing figured out. Make a date with the award-winning Rom-Comrades for an improvised, romantic fling.



CIRCLE OF LIFE

MAR 3 - 7 | 9PM | \$22/\$18

Circle of Life weaves the tale of two puppets, told using the ancient art form of puppetry following their journeys through Birth, Life and ultimately death.



D&D LIVE: DON'T DREAM IT'S OGRE

MAR 6, 13 + 20 | 10PM | \$20/\$15

Hey now, hey now, it's Wellington's finest comedians & improvisers in the world's most popular fantasy game! Each show stands alone, but together they form an epic struggle against the devious Dream Ogre. Crowd out the house, and dungeon some dragons with us!



DR. DRAMA MAKES A SHOW WITH YOU

MAR 7 - 11 | 6PM + 2PM ON WED | PAY WHAT YOU CAN

Dr Drama is back with a brand new show – but he can't make it without you. Yes, you! Together, we'll go back to where it all began – the origins of theatre – and question what live performance means for us today.



TOO MANY DEAD PEOPLE

MAR 7 - 10 | 7PM | \$20 - \$15

The underworld exists, it's hot, mismanaged and corrupt. Pterodactyls and overcrowding reign, so a plucky bunch of newly-deads band together and journey through the monster-infested world to overthrow death and start the revolution.



THE WILD CARD

MAR 9 - 11 | 9PM | \$20/\$15

One Island. One shipwrecked sailor. One deck of cards. And one wild imagination. The Wild Card explores the perplexing mystery of human existence, through the use of symbols, archetypal imagery in a playful and experimental way.

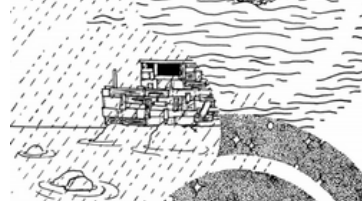


I DON'T KNOW HOW TO DANCE

MAR 9 - 12 | 8.30PM | \$22/\$18

UK alternative-folk duo Good Habits are joined by contemporary dancer Cade Hansen in their latest international collaboration. Displaying their virtuosic cello-accordion playing within original electro-acoustic genre infused composition, they tell a new story.

NZ FRINGE FESTIVAL



ALIVE TONIGHT LIVE!

MAR 10 - 13 | 7.30PM | \$18/\$14

Live recording of the podcast Alive Tonight. We're doing something a bit different, each night of our four night season, we have a four-person panel discussion on a particular topic involving Wellington arts.

INTROSPECTION

MAR 11 - 13 | 7PM | \$20/\$15

Let go, be vulnerable, and embrace the journey that is INTROSPECTION. Join our characters as they confront the barriers within themselves. We welcome laughs, smiles and tears - just step through the door when you're ready. We'll see you on the other side.

SLEEPWALKERS

MAR 12 - 16 | 6.30PM | \$20/\$15

A muse argues with her human in his last moments.

The last woman on earth doesn't want children.

A wizard pilots the first trip to Mars.

H A B B U K

MAR 12 - 17 | 9PM | \$20/\$15

Everything in our life is unlike this World, we don't belong to this place. We no longer enter through the door, nor through the window, we enter through a false wall that leads us to the tireless desire. Him and I, her and I.



YOU MEET IN A TAVERN

MAR 13 | 8.30PM | \$18 - \$14

You Meet In A Tavern brings D&D to life as we explore forests, caves and each others hearts during the quest to save the princess. Is this your typical hero story? Not a chance! We tear away generic troupes and make them our own. Come find out!

CELESTIAL NOBODIES

MAR 14 - 18 | 7PM | \$20 - \$15

With nothing but space, (literally) personified planets bring their struggles of identity and appearance to the stage. Celestial Nobodies is an exciting new educational polylogue that brings gravity to universal experiences through a lens of black comedy.

GREAT GIG IN VR

MAR 16 - 20 | 7.30PM | \$20/\$15

The tech behind 3D video games and VFX-heavy blockbusters is opening up possibilities for more convincing immersion in virtual realms - and now actors can join you there as digital avatars, to guide you, entertain you, maybe even kill you.

MAN LESSONS

MAR 16 - 20 | 8.30PM | \$22/\$18

Over the past five years, a doco crew has been following Adam's transition. Now, take a deeper look into the man behind the story. A live exposé adventure into an already intimate and earnest film. Clown, sock puppetry, music, and ever-before-seen footage!

NZ FRINGE FESTIVAL



SOMETHING STARTING TO STINK

MAR 17 - 20 | 6.30PM | \$20/\$15
So, how did you cope with, *glances around, whispers*, lockdown? Cuz, in our flat, the lounge witnessed a car crash, a disco, and... mysterious shoes? The bedrooms saw that, and more. The bathroom? Don't ask. Friends, enemies, lovers, all waiting, watching...



SLAY THE DRAGON OR SAVE THE DRAGON OR NEITHER

MAR 19 - 27 | 7PM | \$25 - \$20
Dragon collides magic realism with a quest for home. In 2012, a young Chinese-New Zealander flew halfway across the world to discover the mystery behind her "Chinese-ness." She ended up on a surreal quest – lost in a mysterious dream.



SHIT SPEARE

MAR 18 - 20 | 9PM | \$20/\$15
No-one's denying that Shakespeare wrote some beautiful stuff. That wonderful theatrical moments happen in his plays. But, yeah, they're written by a man - a man's view of the world and of women ...Sir, you speak a language we understand not!

KEEP CONNECTED

 BATS.CO.NZ

 04 802 4175

 @BATS_THEATRE

 BATSTHEATRE

 @BATS_THEATRE

 SUBSCRIBE TO BATSMAIL AT BATS.CO.NZ



THANK YOU TO...

You!

For reading this, and supporting us.
You're a bloody legend.



Absolutely Positively Wellington City Council
Me Heke Ki Pōneke



THE Sargood REQUEST
ACCESS • PARTICIPATION • INSPIRATION

RANDOM GROUP

creative NZ
ARTS COUNCIL OF NEW ZEALAND - TOI AOTEAROA

Wellington Community Trust
inspiring community resilience



NZCT
THE COMMUNITY TRUST





wharow party snaps ~3



*We love you xx
See y'all V soon!*